

# RESILIENCE @ BELLOSHIRE

Bellingen Shire COUNCIL 

“STRENGTHENING OUR CONNECTED COMMUNITY”



Population: 13K,  
Land Area: 160Kha, Density 0.08 (people/ha)  
Businesses: 1.2K

---

## 2019/2020 fire season impacts – The Bellingen Shire

- **The Bellingen Shire** was impacted by Bushfires including the Bees Nest (148Kha) between August and October 2019 and Anderson's Creek fire (14Kha) between November 2019 and January 2020.
- **Bellingen Shire – 36.5Kha – 22% of country** (31Kha comprised National parks and State Forest)
- **Tourism impacts – 40-60%** ↓ across the region throughout the bushfire season, approx. **\$40M** impact, represents **10% Gross Regional Product**
- **Material** - 2 facilities destroyed, 2 damaged, 1 outbuilding damaged, 46 Rural landholders effected, livestock: 79
- **46** potential rural landholders affected (assessment still in progress through DPI).
- **Events cancelled due to Bushfires/COVID-19** – Summer Music Festival, Camp Creative 2021, Bellingen and Dorrigo Shows, Readers and Writers Festival, Fine Music Festival.



Resilience  
NSW



Mid North Coast  
Joint Organisation



| <b>PROGRAM AREAS</b>                                   | <b>\$K</b> |
|--|------------|
| MANAGING RISK  | 345        |
| EFFECTIVE RESPONSE TO AND RECOVERY FROM EMERGENCIES    | 672        |
| ENABLING, EMPOWERING & SUPPORTING COMMUNITY RESILIENCE | 483        |

Over \$710K of funds available to community through grants



# Managing Risk

- \$190K of "Getting Ready" grants
- Vegetation Mapping
- Alternative Routes – one way in one way out
- Indigenous Protection, film and information on traditional fire protection practices

# Effective Response to and Recovery from Disasters

- Pilot Emergency Response
  - "world class"
  - Community led – council partnered
  - Clinic – 1st in NSW
  - Neighborhood Care Network created
  - Call Centre
  - Website





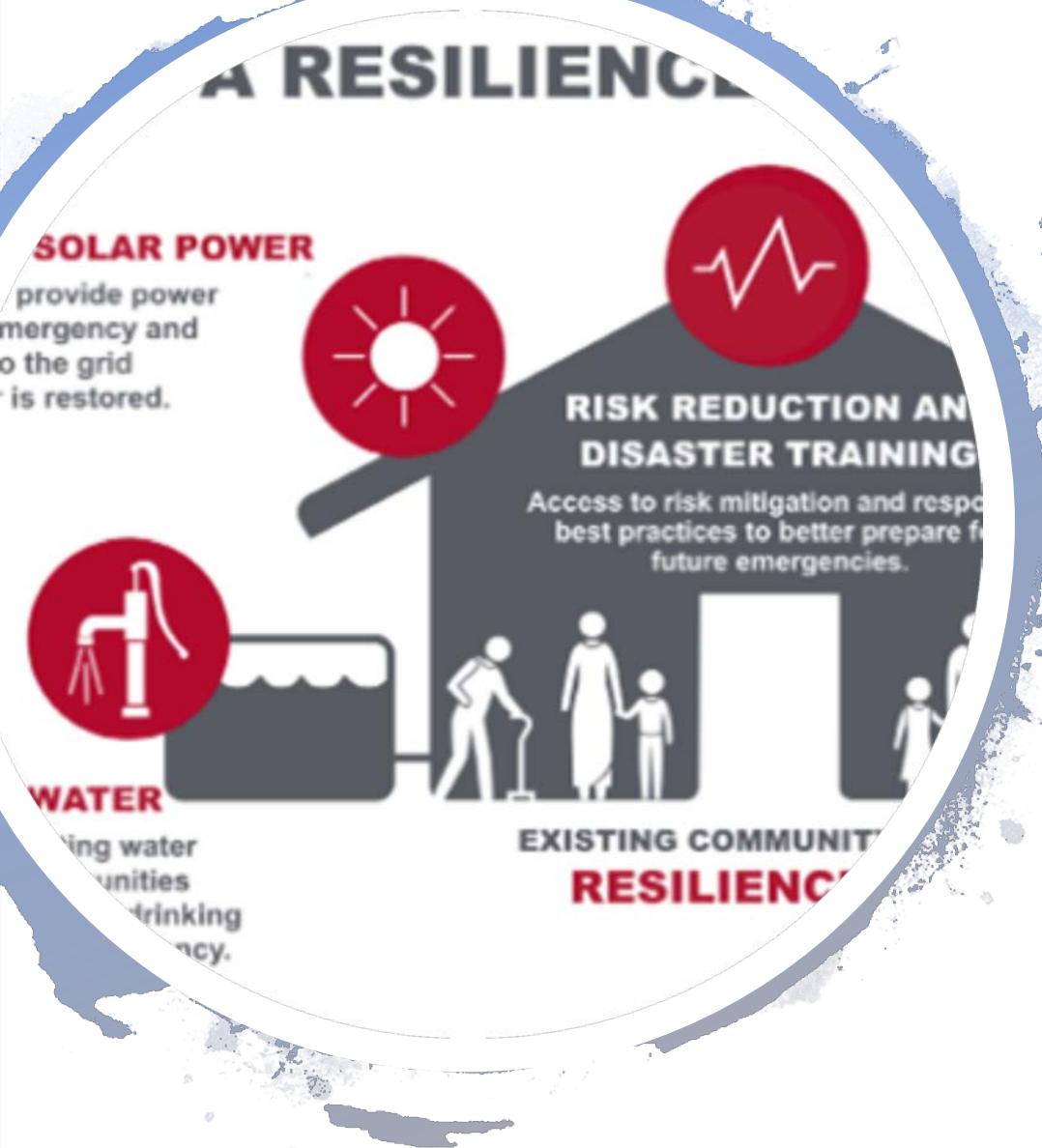
# Enabling, Empowering and supporting Community Resilience



- 15 community members: 2 modules in community resilience with Charles Sturt University – start of Resilience Network
- \$240K of grants to accelerate community led action
- Agree Community Resilience Hub model (via Deliberative Panel process)



# Community Resilience Hub



- Concept emerged as a priority during Bushfire response consultations across Bellingen Shire as a nexus of community resilience that could stand up and down in emergencies,
- The vision is for a network, supported and augmented by community facing facilities, activities and organisations.
- Operating on a hub and spoke model, it could coordinate communication, emergency and climate information, distribute resources, and promote Shire wide priorities such as climate resilience, food resilience and well-being
- There are a broad range of views as to what a Community Resilience Hub might encompass - and we are looking forward to defining this more clearly through a participatory engagement process.
- Key challenges are the future operation and sustainability of the Hub, as well as its location.